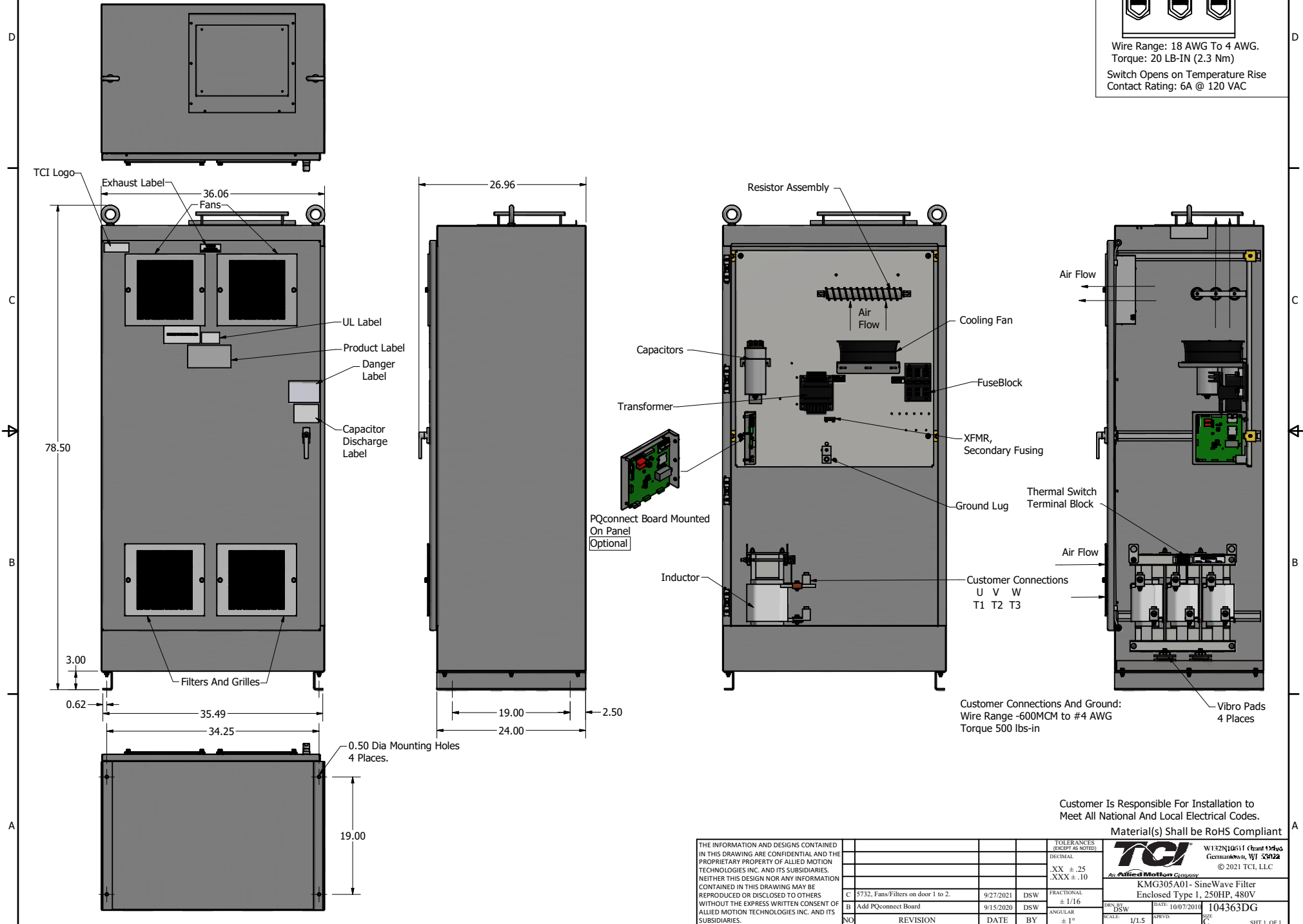
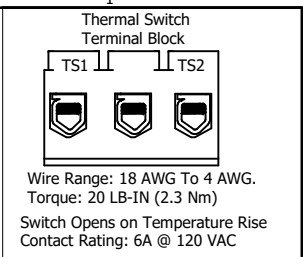


SineWave Part Number	Schematic Drawing#	Approx Weight (LBS)	Shop Drawing#
KMG305A01A	24281-3A	789	104363-1
KMG305A01P	24281-3P	794	104363-2

HorsePower (HP)	kVar	Max Amps	Voltage (V)	HZ	Phase
250	20	305	480	60	3



Customer Is Responsible For Installation to Meet All National And Local Electrical Codes.

Material(s) Shall be RoHS Compliant

THE INFORMATION AND DESIGNS CONTAINED IN THIS DRAWING ARE CONFIDENTIAL AND THE PROPRIETARY PROPERTY OF ALLIED MOTION TECHNOLOGIES INC. AND ITS SUBSIDIARIES. NEITHER THIS DESIGN NOR ANY INFORMATION CONTAINED IN THIS DRAWING MAY BE REPRODUCED OR DISCLOSED TO OTHERS WITHOUT THE EXPRESS WRITTEN CONSENT OF ALLIED MOTION TECHNOLOGIES INC. AND ITS SUBSIDIARIES.					TOLERANCES (EXCEPT AS NOTED) DECIMAL .XX ± .25 .XXX ± .10
	C	5732, Fans/Filters on door 1 to 2.	9/27/2021	DSW	FRACTIONAL ± 1/16
	B	Add PQconnect Board	9/15/2020	DSW	ANGULAR ± 1°
	NO	REVISION	DATE	BY	
					W132N10611 (Rev 1) 11/15/20 Germantown, WI 53022 © 2021 TCI, LLC TCI An Official Motion Company KMG305A01 - SineWave Filter Enclosed Type 1, 250HP, 480V DWN BY: DSW DATE: 10/07/2014 SCALE: 1/1.5 DRAWN BY: TCI 104363DG SHEET 1 OF 1